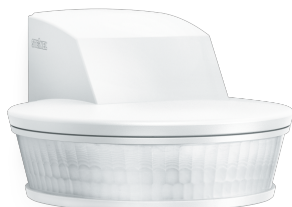


sensIQ S

EVO white

EAN 4007841 034955

Article number 034955



infrared sensor 3 x
100°



3 zones scalable
2-20m

2000 W

2000 W max.
(LED-ready)



IP54



2 - 2000 lux
daylight operation



5 sec - 15 min



ideal 2 - 5 m

Teach

Teach mode



energy saving

5 years

manufacturer's
warranty
[steinel-professional.de/garantie](https://www.steinel.de/garantie)

Function description

The evolution of perfection. The sensIQ S is just as perfect as its larger role model. For indoors and outdoors, ideal for building entrances, loading bays, for mounting heights of up to 5 m, quadruple sensor system for optimum surveillance over 3x100° coverage angle, 20 m reach (tangential), reach setting to the accuracy of a metre in 3 independent directions. Remote control and corner wall mount bracket included.

Technical specifications

Type	Other
Type of accessory	Corner adapter
Dimensions (L x W x H)	128 x 114 x 74 mm
Mains power supply	100 – 240 V / 50 – 60 Hz
Power supply, detail	500 VA max., 120 V
Sensor Technology	passive infrared
Application, place	Indoors, Outdoors
Installation site	wall, corner
Installation	Surface wiring
Mounting height	2,00 – 5,00 m
Reach, radial	r = 4 m (42 m ²)
Reach, tangential	r = 20 m (1047 m ²)
Reach, detail	Reach adjustable from 2 - 20 m in 3 directions (100° in each)
Detection angle	300 °
Angle of aperture	180 °
Switching zones	1360 switching zones
Optimum mounting height	2 m
Mechanical scalability	Yes
Sneak-by guard	Yes
Capability of masking out individual segments	Yes
Electronic scalability	No
Twilight setting TEACH	Yes
Twilight setting	2 – 1000 lx
Time setting	5 s – 15 Min.
Output	2000 W
Switching output 1, resistive	2000 W

Fluorescent lamps, electronic ballast 1500 W

Fluorescent lamps, uncorrected 1000 VA

Fluorescent lamps, series-corrected 700 VA

Fluorescent lamps, parallel-corrected 1000 VA

Switching output 1, low-voltage halogen lamps 1000 VA

LED lamps 100 W

LED lamps > 2 W 300 W

LED lamps > 8 W 600 W

Capacitive load in µF 176 µF

Constant-lighting control No

Basic light level function No

Functions Normal / test mode, Manual ON / ON-OFF

Settings via Remote control, Potentiometers, Smart Remote

With remote control Yes

Interconnection Yes

Type of interconnection Master/master

IP-rating IP54

Material Plastic

Ambient temperature -20 – 50 °C

Application, room multi-storey / underground car park, outdoors, warehouse, front door, all round the building, courtyard & driveway, Indoors

Colour white

Colour, RAL 9010

IDs, certificates VDE

Manufacturer's Warranty 5 years

Version white

PU1, EAN 4007841034955

Accessories

EAN 4007841 007638	Remote control RC9
EAN 4007841 608804	Corner wall mount sensIQ S
EAN 4007841 608835	Corner wall mount sensIQ S
EAN 4007841 009151	Remote control Smart Remote
EAN 4007841 608828	Corner wall mount sensIQ S

sensIQ S

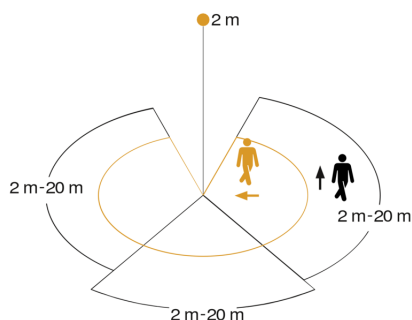
EVO white

EAN 4007841 034955

Article number 034955



Detection Zone



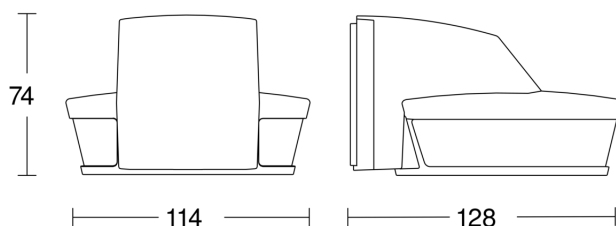
Mögliche Montagehöhe: 2,00 m – 5,00 m

Orange: radial

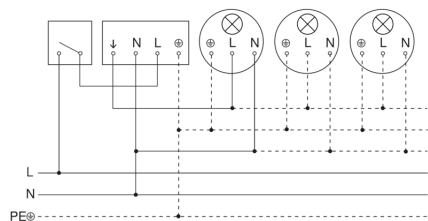
Schwarz: tangential

3 skallerbare Zonen

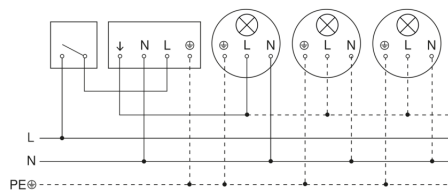
Dimension Drawing



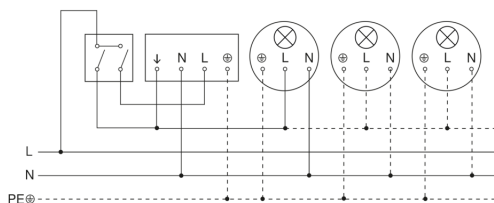
Light without neutral conductor



Light with neutral conductor



Connection using two-circuit switch for manual and automatic operation



Connection via a two-way switch for manual override and automatic operation

