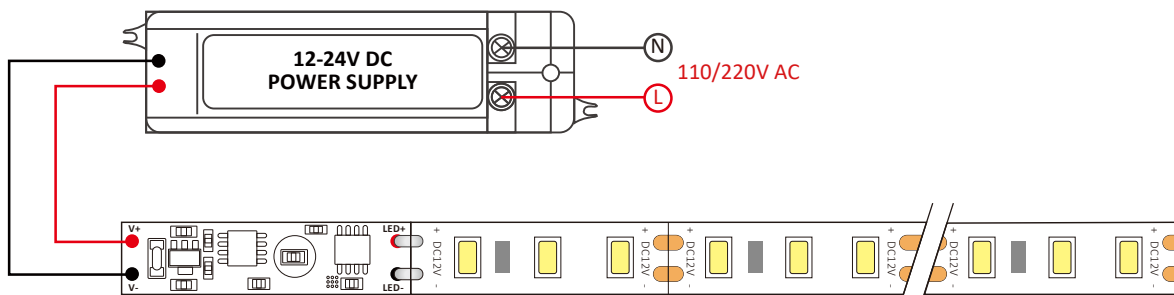


Functions

Model	GXLS329 - LED STRIP TOUCH DIM
Operation	Touch switch ON/OFF with dimming and 0V memory
Input Voltage	12V–24V DC
Output Voltage	12V–24V DC
Input Current	5A
Height of Spring	20mm
Dimension	40*10mm

Connection Diagram

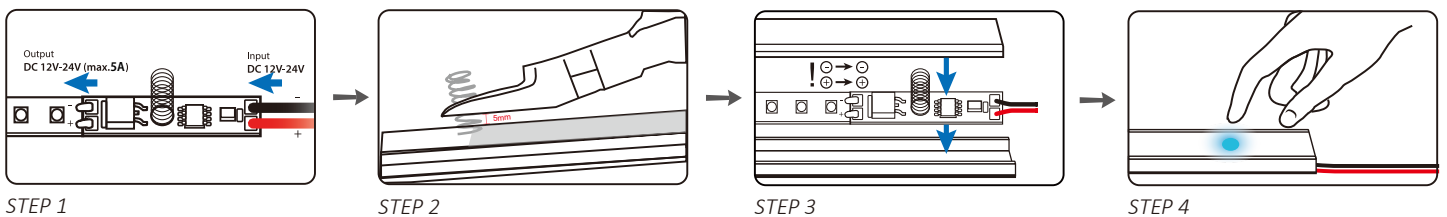


Touch switch ON/OFF with dimming and 0V memory.

Operations

- The conductive spring needs to be covered by insulation material such as glass, plastic or ceramic material, thickness ≤ 3mm.
- With memory internal switch on/off and dimmer:
- After the power is turned on, the switch state and brightness are same as the last state after the power cut off.
- Quick touch (time is less than 550ms) can turn the light on and off. One touch to turn on, another touch to turn off. The lamp is 90% bright when it is on.
- Hold on touching (time is above 550ms) can adjust the brightness endlessly. It will reduce the brightness endlessly to the minimum in 3 seconds holding on when the light is on. It will increase the brightness endlessly to 100% in 3 seconds holding on.
- Quick touch and hold on touching can be chosen anytime without any collision.
- This sensor will memorize the status of the dimming in DC0V (power off) or DC12V-24V.

Installation Steps



Note: Height Requirement of Spring: Cut the Spring 5mm above the PC cover. It is easy to cause a short circuit if the spring is too long with the PC cover is installed.